



MCS SWATH 3

GENERAL

Type:	Typhoon Class SWATH		
Built:	2025		
Class:	Lloyds Æ 100 A1 MCA Category 1, HSC		
Flag:	UK		
Dimensions:	29.6m x 11.2m x 2.4m (draft)		
Displacement:	140t		
IMO:	1040459		
Call sign:	TBC		
Port of registry:	Glasgow		

TANK CAPACITIES

Fuel oil:	24m ³	Ballast:	33m ³
Fresh water:	2m ³	Bilge/Black Water:	0.5m ³
Urea:	2.8m ³	Lube Oil:	0.2m ³
Sewage:	0.5m ³	Hydraulic Oil (total):	0.7m ³

PERFORMANCE

Sprint speed:	23 knots
Cruising speed:	21 knots

PROPULSION

Main engines:	2 x MAN D2862LE48B IMO Tier III+Euro Stage V
Total power:	2 x 1066 kW
Gearbox:	ZF 3050A PTI
Propellers:	Hundested CPP
Bow thruster:	2 x 90 kW

AUXILIARY EQUIPMENT

Main generator set:	2 x Kohler 35EFKOZD
Capacity:	2 x 35kW 230/400V 50Hz
Stabilisers:	4 Fins - Island Engineering
Ballast Treatment System:	DESMI CompactClean-35

DECK

Deck crane:	Guerra M65
Capacity:	765kg at 7.1m
Deck carrying capacity:	12t
Clear deck space:	95m ²
Fixing points:	2 x 10ft ISO Containers (not on board)
Fender:	Buoyant Works, various sizes

ACCOMMODATION

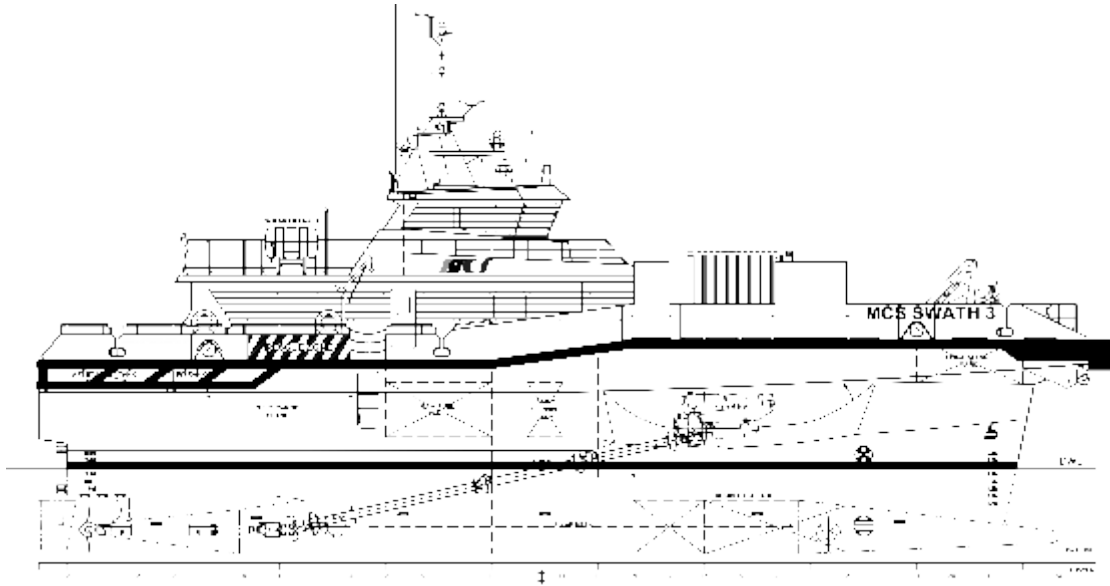
Heated and air conditioned passenger saloon with suspension seats for 24 PAX with work tables and UK & Euro 230V socket outlets. Pantry area with amenities, shower and toilets. Maximum six crew.

NAVIGATION EQUIPMENT

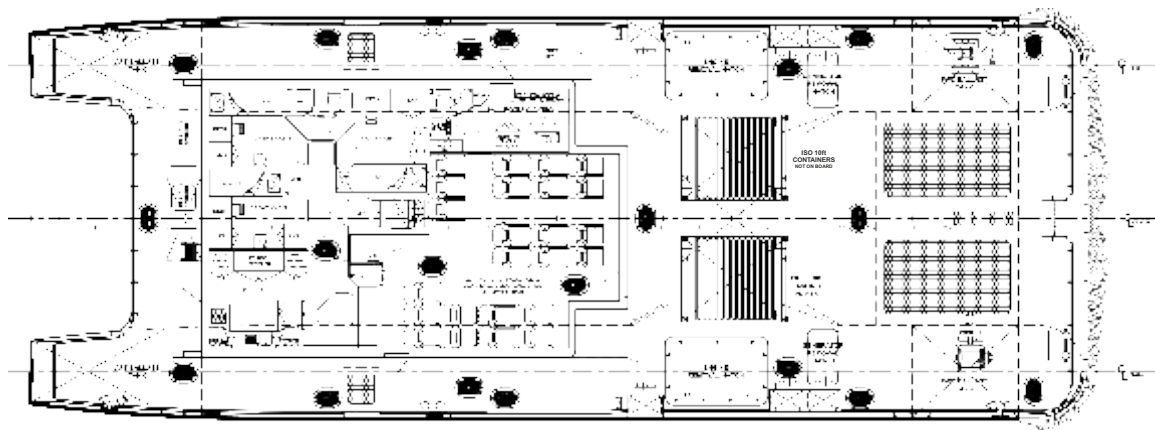
Searchlight:	2 x Colorlight LED
Magnetic compass:	Sestrel Major Binnacle
Satellite compass:	Furuno SC70
Gyro Compass:	Furuno GC80
GPS:	Furuno GP170
Radar system:	2 x Furuno 2218BB
ECDIS:	Furuno FMD3 100
Autopilot:	Navitron NT888G
AIS:	Furuno FA 170
Echosounder:	Furuno FE800
VHF/DSC:	Furuno FM8900S
Handheld VHF:	Jotron TR30
SSB:	Furuno FS2575
Navtex:	Furuno NX700B

WIFI

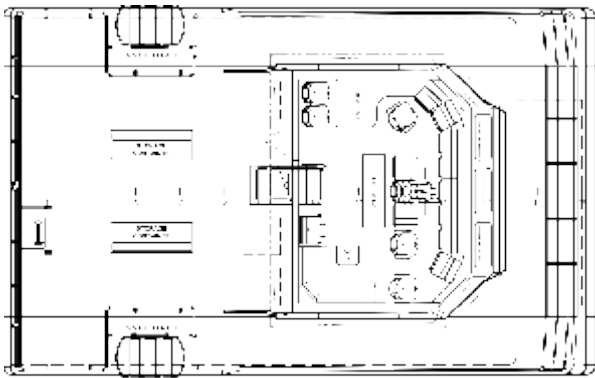
Access:	Starlink and 4G/5G
---------	--------------------



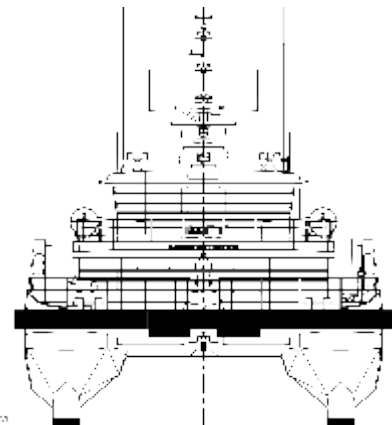
PROFILE



MAINDECK



BRIDGE-DECK



BOW PROFILE

MCS SWATH 3



Maritime House
69-71 Main Road, Fairlie
North Ayrshire, Scotland, KA29 0AD

T +44 (0)1475 568838
E menno@maritimecraft.co.uk
www.maritimecraft.co.uk